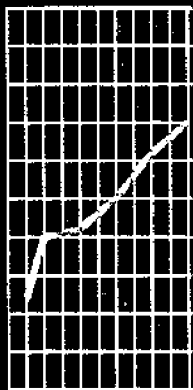


April 1996

Tasmanian Statistical Indicators



ABS Catalogue No. 1303.6

Embargoed until 11.30 a.m. Wednesday 10 April 1996

TASMANIAN STATISTICAL INDICATORS APRIL 1996

**Denis W. Rogers
Acting Deputy Commonwealth Statistician**

AUSTRALIAN BUREAU OF STATISTICS

CATALOGUE NO. 1303.6

	Page
34 Registrations of new motor vehicles	24
35 Turnover of retail establishments at current prices	24
36 Major Statistical Indicators—Australian and State figures	25
 EXPLANATORY NOTES	 26

INQUIRIES	<ul style="list-style-type: none"> • <i>for further information about statistics in this publication and the availability of related unpublished statistics</i>, contact the Hobart office of the ABS on (002) 20 5800. • <i>for information about other ABS statistics and services</i>, please refer to the back of this publication.
-----------	---

CONTENTS

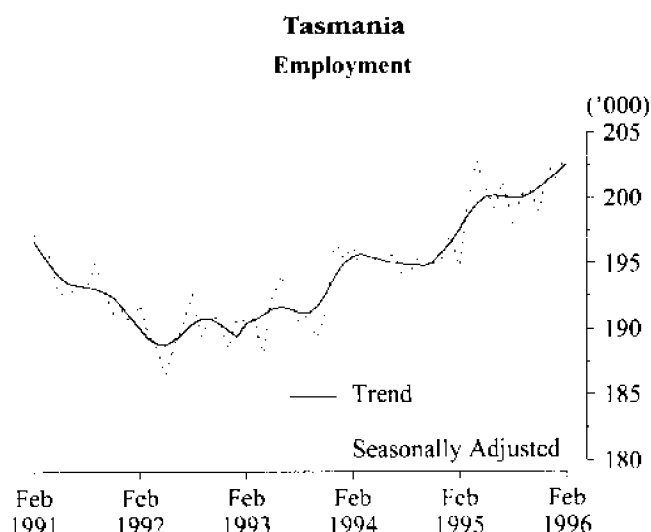
MAIN FEATURES		Page v
TABLES		
1	Population	1
2	Births, deaths and marriages registered	1
3	Labour force status—seasonally adjusted and trend series	2
4	Labour force status by region and Tasmania, males	3
5	Labour force status by region and Tasmania, females	4
6	Labour force status by region and Tasmania, persons	5
7	Teenage labour market	6
8	Employed persons by occupation	7
9	Employed wage and salary earners, sector and industry	8
10	Average hours worked	9
11	Job vacancies	9
12	Industrial disputes	9
13	Average weekly earnings of employees	10
14	Weekly award rates of pay indexes	10
15	Summary of annual movements in wages and prices	11
16	House price index numbers, Hobart	11
17	Consumer price index	12
18	Price index of materials used in building other than house building	13, 14
19	Miscellaneous indicators of production (production of selected commodities)	15
20	Livestock slaughtering, numbers	16
21	Livestock slaughtering—seasonally adjusted and trend series	16
22	Meat production, Tasmania	17
23	Principal mineral concentrates produced	17
24	Sawmills and plywood mills: logs delivered and timber produced	18
25	Chipping and grinding of wood	18
26	Logs delivered for milling or chipping	19
27	Building approvals	20
28	Dwelling commencements	20
29	Banking statistics	21
30	Private new capital expenditure by type of asset	21
31	Passenger arrivals and departures	22
32	Passenger arrivals by air and sea into Tasmania	22
33	Accommodation statistics	23

MAIN FEATURES

EMPLOYMENT

States' trend series
comparisons

The Australian and State *trend series* comparisons are given on page 25. There was an increase of 2.5% in Tasmania's employment over the year to February 1996. The largest percentage increase in employment was in New South Wales (3.2%). The next highest percentage increase in employment was in Victoria (2.8%), followed by Queensland (2.3%) and South Australia (1.1%). Western Australia had an increase in employment of 0.8%.



Regional Tasmania's original
series figures

In the Hobart and Southern Statistical Division the estimate of *unadjusted* employment increased by 2,100 between December 1994 and December 1995 to 102,300. Employment in the Northern Statistical Division increased by 6,100 between December 1994 and December 1995 to 59,300. The estimate of employment in the Mersey-Lyell Statistical Division was 44,300 in December 1995, a decrease of 1,100 on the figure for December 1994.

(See tables 3-8, pages 2-7.)

UNEMPLOYMENT

Tasmania's trend series
figures

The Tasmanian provisional *trend series* estimate of 22,500 unemployed persons in February 1996 was a decrease of 1,800 on the figure for February 1995 of 24,300. The estimate of the unemployment rate of 10.0% in February 1996 compared with 10.9% in February 1995.

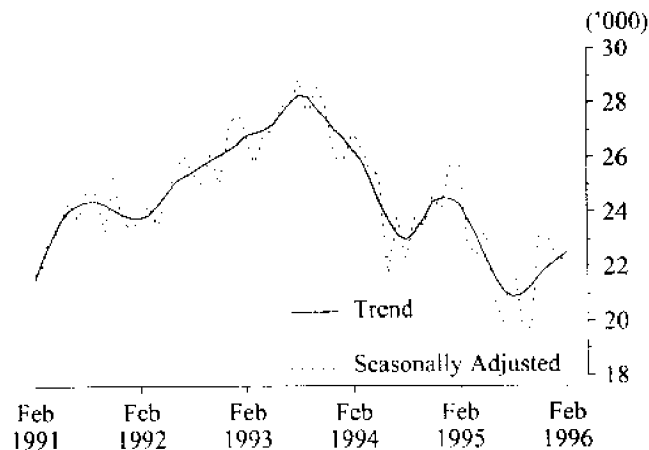
(See tables 3-8, pages 2-7.)

THE LABOUR FORCE

Tasmania's trend series
figures

In February 1996 there was an *unadjusted* estimate of 368,200 civilian Tasmanians aged 15 or more. There were an estimated 225,100 persons (based on *trend series* estimates) in the labour force. The estimate of the labour force participation rate in February 1996 was 61.1%, compared with 60.5% in February 1995.

Tasmania Unemployment



For males, the estimate of the participation rate was 71.6%, compared with 71.4% for February 1995. For females, the estimate of the participation rate was 51.0 %, compared with 49.9% in February 1995.

(See table 3, page 2.)

EMPLOYED WAGE AND SALARY EARNERS

In March 1995 there were approximately 137,600 employed wage and salary earners in Tasmania. In March 1993 the figure was 147,100 employed wage and salary earners.

In February 1995 the Tasmanian public sector accounted for 31.7% of all employed wage and salary earners. Overall, the category Community services had the highest industry representation (27.8%, compared with the equivalent figure of 24.9% recorded in February 1993). The next highest industry grouping was Wholesale trade and Retail trade (19.4%, compared with 20.8% in February 1993) and Manufacturing (15.2%, compared with 14.8% in February 1993).

In February 1995, women made up 45.5% of employed wage and salary earners. In February 1993, the equivalent figure was 44.8%.

(See table 9, page 8.)

AWARD RATES OF PAY INDEXES

The annual movement from January 1995 to January 1996 of weekly award rates of pay indexes for Tasmania rose by 1.4% for full-time adult females and by 1.4% for full-time adult males, for a combined annual increase of 1.4%. For Australia, the figures were 1.5% for females and 1.2% for males, for a combined annual increase of 1.3%.

For full-time adult female employees in Tasmania, the largest industry increases over this 12 month period occurred in the Manufacturing industry (4.0% per cent); and the Recreation, personal and other services industry (2.3%).

For the same period for full-time adult male employees in Tasmania, the largest industry increases occurred in the Transport and storage industry (3.2%); and the Public administration and defence industry (2.3%).

The largest occupation increase over the same period for full-time adult female employees occurred in Tradespersons (3.7%); and Plant and machine operators, and drivers (3.2%).

For full-time adult male employees the largest occupation increases over the period occurred in Plant and machine operators, and drivers (2.1%); and Salespersons and personal services workers (1.9%).

(See table 14, page 10.)

HOUSE PRICE INDEXES

The price index for established houses in Hobart fell by 0.1% in the December quarter 1995. Falls also occurred in Adelaide, Sydney and Perth, while small increases occurred in Darwin, Canberra and Melbourne.

The Australian index fell by 0.2% for the quarter, but for the year to December 1995 rose by 0.3%.

The price index for project homes in Hobart remained steady in the December quarter 1995, while the national average fell by 0.2%.

House Price Index: Eight Capital Cities, December quarter 1996, ABS catalogue number 6416.0, released on 7 March 1996, \$13.00

BUILDING MATERIALS PRICE INDEXES

Prices for house building materials in Hobart rose by 0.3% during January 1996, which was the highest increase of any State capital for the month. For the twelve months ending January 1996, prices in Hobart increased by 3.2% per cent, which was also the highest increase for any State over that period. Falls were recorded in Melbourne, Brisbane and Adelaide, while the Australian index remained unchanged from that of January 1995.

For materials used in other than house building, the price index in Hobart increased by 0.2%, during January 1996, and by 2.9% for the year ending January. The only higher increase recorded for the year was in Perth, at 3.0%.

Components which registered the most change in Hobart over the year to January were pre-cast concrete products (up 6.4%), structural steel (up 5.0%) and non-ferrous pipes and fittings (down 6.8%).

Price Index of Materials Used in House Building, January 1996, ABS catalogue number 6408.0, released on 8 March 1996, \$13.00
Price Index of Materials Used in Building Other than House Building, January 1995, ABS catalogue number 6407.0, released on 8 March 1996, \$15.00

HOUSING FINANCE

The trend estimate of the number of secured housing finance commitments entered into in Tasmania in January 1996 fell 2.1% on the previous month to 942. This is the third successive monthly fall, following the peak figure of 1,013 in September 1995.

However, the national trend estimate for January rose by 0.2% to 38,354, representing the ninth consecutive month of increase since April 1995.

In the twelve months ended January 1996, the Tasmanian trend estimate for the number of commitments rose 4.2%, from 904 to 942. This was a smaller increase than the Australian trend estimate, which rose 6.1%, from 36,148 to 38,354.

Housing Finance for Owner Occupation, January 1996, ABS catalogue number 5609.0, released on 13 March 1996, \$14.00

LIVESTOCK SLAUGHTERING

Trend estimates The January 1996 Tasmanian trend estimate for the slaughtering of cattle and calves was 1.2% lower than that recorded in December 1995. The number of pigs slaughtered in the same period increased by 1.3% while the number of sheep and lambs slaughtered increased by 2.3%.

The trend estimate for slaughtering sheep and lambs was 75,000 in January 1996, which was 11.9% below the 85,100 recorded in January 1995. The slaughtering of sheep and lambs continued to increase from a low of 69,300 in August 1995.

The trend estimate of 7,000 pigs slaughtered in January 1996 was 10.3% below the 7,800 slaughtered in January 1995. The number of pigs slaughtered has continued to increase from the low point of 6,900 in October 1995.

The cattle and calves slaughtering trend estimate continued its decline of recent months. The number of cattle and calves slaughtered in January 1996 was 19,400, which was 8.1% below the 21,100 recorded in January 1995.
(See table 21, page 16.)

BUILDING APPROVALS

There were 227 new dwelling units approved during January 1996 in Tasmania. This was an increase of 4% on the number recorded for December 1995 (219) and also a 4% increase on the number recorded for January 1995 (218).

For the twelve months ended January 1996 there were 2,766 new dwelling units approved, 23% below the 3,576 units recorded for the twelve months ended January 1995.

The highest number of dwelling units approved in January 1996 was recorded by the City of Hobart with 71, followed by the City of Launceston with 16, the Municipality of Central Coast with 14 and the Municipality of Circular Head with 11.

The value of all building approved, at current prices, in January 1996 was \$69.2 million, 97% above the December 1995 figure of \$35.0 million and 104% above the January 1995 figure of \$33.9 million.
(See table 27, page 20.)

RETAIL

The trend estimate for turnover of retail and selected service establishments for January 1996, in Tasmania, was \$244.5 million, an increase of 6% on the January 1995 figure of \$230.1 million. The trend estimate for Tasmania has shown a slight increase over the last five months.

The trend estimate of turnover for January 1996, for Australia (\$10,102.6 million), was 8% higher than for January 1995 (\$9,332.6 million). The trend estimate of retail turnover increased by 0.4% between December 1995 and January 1996.

In original terms, the estimate of retail turnover in January 1996, for Tasmania, was \$243.2 million, 10% above the figure recorded for January 1995 (\$220.9 million).
(See table 35, page 24.)

NEW MOTOR VEHICLE REGISTRATIONS

There were 871 new motor vehicles (excluding motorcycles) registered in Tasmania during January 1996. This was 50% below the 1,734 registered in December 1995 and 1% below the figure for January 1995 (879).
(See table 34, page 24.)

1

POPULATION, TASMANIA

	Estimated resident population at end of period	Natural increase ¹	Net estimated migration gain	Total population growth	Annual growth rate ²
Year or quarter	'000	'000	'000	'000	%
Year ended 30 June					
1991	466.8	3.3	1.2	4.6	1.00
1992	469.7	3.2	- 0.3	2.9	0.62
1993	471.4	3.2	- 1.5	1.7	0.35
1994	472.5	3.1	- 2.0	1.1	0.24
Quarter					
1994					
March	472.2	0.8	- 0.8	0.0	0.19
June	472.5	0.7	- 0.4	0.3	0.24
September p	472.8	0.6	- 0.3	0.3	0.19
December p	472.8	0.8	- 0.8	0.0	0.13
1995					
March p	473.2	0.9	0.5	0.4	0.21
June p	473.0	0.6	- 0.8	0.2	0.11

¹ Excess of live births registered over deaths registered (based on usual State of residence).

² Percentage growth from same quarter in previous year.

2

BIRTHS, DEATHS AND MARRIAGES REGISTERED, TASMANIA

Year or quarter	Births		Deaths		Infant mortality ¹		Marriages	
	No.	Rate ²	No.	Rate ²	Deaths	Rate ³	No.	Rate ²
Year ended 31 December								
1990	7 043	15.25	3 713	8.04	63	8.9	3 026	6.55
1991	6 857	14.69	3 666	7.86	59	8.6	3 069	6.58
1992	6 956	14.81	3 722	7.92	42	6.0	3 081	6.56
1993	6 804	14.43	3 618	7.67	37	5.4	3 055	6.48
1994	6 836	14.47	3 912	8.28	48	7.0	2 887	6.11
Quarter								
1993								
September	1 710	..	999	..	11	6.4	431	..
1994								
September	1 735	..	1 165	..	17	9.8	379	..
December	1 702	..	881	..	10	5.9	768	..
1995								
March	p 1 800	..	p 898	..	p 10	p 5.6	1 067	..
June	p 1 605	..	p 960	..	p 15	p 9.3	667	..
September	p 1 696	..	p 967	..	p 12	p 7.1	307	..

¹ Registered deaths of children under one year of age.

² Rate per 1,000 of estimated mean population.

³ Rate per 1,000 live births.

(Source: unpublished data.)

3

LABOUR FORCE STATUS, TASMANIA¹: SEASONALLY ADJUSTED AND TREND SERIES

Month	Seasonally adjusted series				Trend series ²			
	Employed	Unemployed	Unemployment rate	Participation rate	Employed	Unemployed	Unemployment rate	Participation rate
	'000	'000	%	%	'000	'000	%	%
Males								
1995								
February	112.2	16.1	12.6	71.1	113.6	15.1	11.7	71.4
March	114.2	14.2	11.1	71.2	113.7	15.0	11.7	71.4
April	114.5	14.8	11.4	71.6	113.8	14.8	11.5	71.3
May	113.9	14.9	11.6	71.4	113.9	14.5	11.3	71.1
June	113.5	14.4	11.3	70.9	113.7	14.2	11.1	70.8
July	114.1	12.9	10.1	70.3	113.5	13.7	10.8	70.5
August	112.6	14.4	11.3	70.3	113.1	13.4	10.6	70.1
September	112.9	13.4	10.6	69.9	112.9	13.3	10.5	69.9
October	113.2	11.7	9.3	69.1	113.1	13.3	10.5	69.9
November	112.8	13.6	10.8	70.0	113.5	13.5	10.6	70.2
December	113.8	14.7	11.4	71.0	114.1	13.7	10.7	70.7
1996								
January	114.7	14.0	10.9	71.1	114.8	14.0	10.9	71.2
February	117.0	14.0	10.7	72.4	115.5	14.1	10.9	71.6
Females								
1995								
February	82.8	9.2	10.0	49.3	83.9	9.1	9.8	49.9
March	84.8	8.8	9.4	50.2	84.9	8.7	9.3	50.2
April	87.9	7.7	8.1	51.3	85.7	8.2	8.8	50.4
May	85.9	8.2	8.7	50.4	86.2	7.8	8.3	50.4
June	85.9	7.0	7.5	49.7	86.5	7.4	7.9	50.3
July	86.5	7.2	7.7	50.2	86.6	7.3	7.8	50.3
August	86.2	7.7	8.2	50.3	86.8	7.5	7.9	50.5
September	87.5	7.1	7.5	50.7	87.0	7.7	8.1	50.7
October	87.9	7.9	8.2	51.2	87.2	8.0	8.4	50.9
November	86.7	9.4	9.8	51.4	87.3	8.2	8.6	51.1
December	88.2	8.2	8.5	51.5	87.3	8.3	8.7	51.1
1996								
January	86.5	7.8	8.2	50.4	87.2	8.4	8.8	51.1
February	86.9	8.4	8.9	50.9	87.1	8.4	8.8	51.0
Total								
1995								
February	195.0	25.3	11.5	60.1	197.6	24.3	10.9	60.5
March	199.0	23.1	10.4	60.5	198.6	23.7	10.7	60.6
April	202.4	22.5	10.0	61.3	199.5	23.1	10.4	60.6
May	199.8	23.1	10.4	60.7	200.1	22.3	10.0	60.6
June	199.4	21.4	9.7	60.1	200.2	21.6	9.7	60.4
July	200.6	20.1	9.1	60.1	200.1	21.1	9.5	60.2
August	198.8	22.1	10.0	60.1	200.0	20.9	9.5	60.1
September	200.4	20.5	9.3	60.1	200.0	21.0	9.5	60.1
October	201.0	19.5	8.9	60.0	200.3	21.3	9.6	60.3
November	199.6	23.0	10.3	60.5	200.8	21.7	9.7	60.5
December	201.9	22.9	10.2	61.1	201.4	22.0	9.9	60.7
1996								
January	201.2	21.8	9.8	60.6	201.9	22.3	10.0	60.9
February	203.9	22.5	9.9	61.5	202.6	22.5	10.0	61.1

¹ For explanation of terms and concepts, refer to *The Labour Force, Australia*, ABS catalogue number 6203.0.

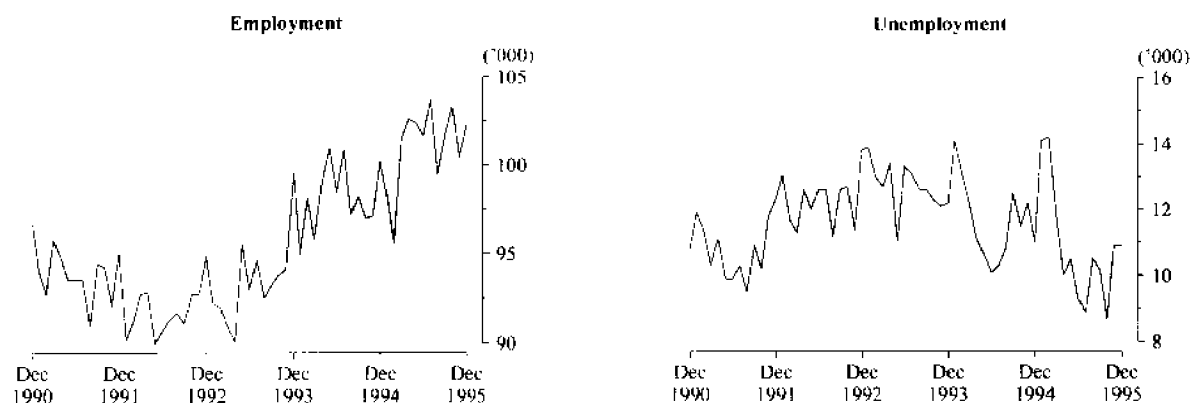
² Trend series revised each month. Users should be aware that the latest observations may be revised substantially.
(Source: *Labour Force Australia*, ABS catalogue number 6203.0.)

Month		Total employed '000	Total unemployed '000	Unemployment rate %	Participation rate %
Hobart and Southern statistical divisions					
1992	December	54.0	9.2	14.5	71.9
1994	December	57.1	6.9	10.8	72.8
1995	October	57.0	5.8	9.2	70.5
	November	55.2	6.8	10.9	69.8
	December	56.3	7.1	11.2	71.3
Northern statistical division					
1992	December	32.0	4.3	11.8	72.5
1994	December	32.1	4.5	12.2	73.4
1995	October	31.1	3.5	10.1	69.8
	November	31.6	3.8	10.7	72.1
	December	33.5	4.6	12.0	74.7
Mersey-Lyell statistical division					
1992	December	25.1	5.7	18.4	76.3
1994	December	27.0	4.1	13.1	73.3
1995	October	24.6	2.2	8.1	63.5
	November	25.2	3.5	12.3	66.9
	December	26.0	3.5	11.9	72.2
Tasmania					
1992	December	111.1	19.1	14.7	73.1
1994	December	116.2	15.4	11.7	73.1
1995	October	112.7	11.4	9.2	68.7
	November	112.0	14.1	11.2	69.7
	December	115.8	15.2	11.6	72.4

¹ For explanation of terms and concepts, refer to *The Labour Force, Australia*, ABS catalogue number 6203.0.

² Data in this table are original series, i.e. they are not part of a seasonally adjusted or a trend series. Accordingly, care should be exercised when using this data. New monthly data from each quarter (March, June, September and December) is published two months after the quarter. (Source: Labour Force Estimates—microfiche tables.)

Hobart and Southern Statistical Divisions—Persons

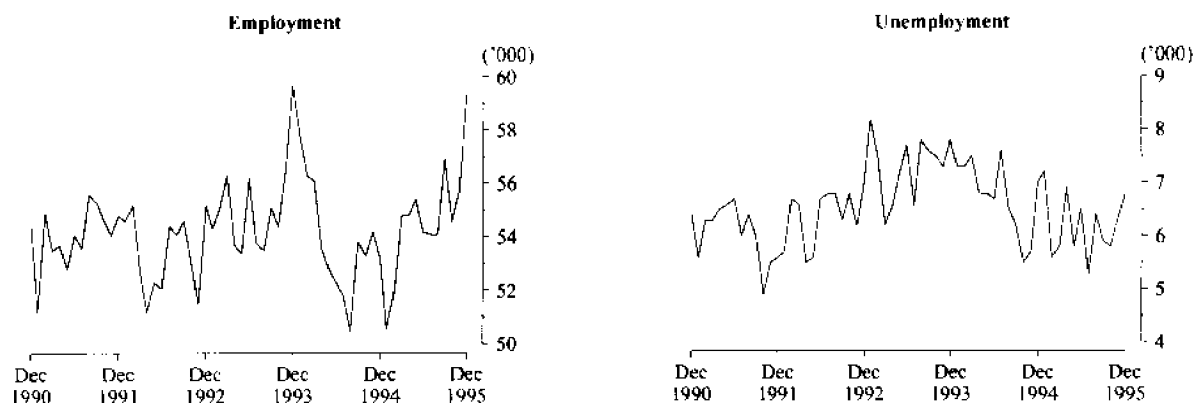


Month		Total employed '000	Total unemployed '000	Unemployment rate %	Participation rate %
Hobart and Southern statistical divisions					
1992	December	41.9	4.6	9.9	51.2
1994	December	43.1	4.1	8.6	51.3
1995	October	46.3	2.9	5.9	52.6
	November	45.3	4.1	8.3	52.8
	December	46.1	3.8	7.7	53.4
Northern statistical division					
1992	December	23.4	2.8	10.5	48.4
1994	December	21.0	2.5	10.6	45.0
1995	October	23.6	2.4	9.1	50.4
	November	24.1	2.6	9.6	52.6
	December	25.7	2.2	7.9	53.6
Mersey-Lyell statistical division					
1992	December	16.4	2.6	13.5	48.0
1994	December	18.4	3.1	14.3	50.9
1995	October	17.8	2.4	12.1	48.3
	November	18.0	2.2	10.8	47.0
	December	18.4	2.8	13.2	51.0
Tasmania					
1992	December	81.8	9.9	10.8	49.7
1994	December	82.6	9.6	10.4	49.5
1995	October	87.7	7.7	8.1	51.0
	November	87.4	8.8	9.1	51.4
	December	90.2	8.8	8.9	52.9

¹ For explanation of terms and concepts, refer to *The Labour Force, Australia*, ABS catalogue number 6203.0.

² Data in this table are original series, i.e. they are not part of a seasonally adjusted or a trend series. Accordingly, care should be exercised when using this data. New monthly data from each quarter (March, June, September and December) is published two months after the quarter.
(Source: Labour Force Estimates—microfiche tables.)

Northern Statistical Division—Persons



Month	Employed		Unemployed		Labour force	Not in labour force	Civilian population aged 15-19	Unemployment rate	Unemployment population ratio	Participation rate
	Full-time	Total	Looking for full-time work	Total						
	'000	'000	'000	'000	'000	'000	'000	%	%	%
Attending neither school nor a tertiary institution full time										
1993 January	7.2	10.1	4.3	4.6	14.7	2.4	17.1	31.2	26.9	85.9
1995 January	6.2	10.1	5.1	5.3	15.4	3.0	18.4	34.2	28.8	83.8
1995 November	6.8	8.9	1.8	2.0	10.8	1.2	12.1	18.3	16.5	90.0
December	7.0	10.2	4.2	4.5	14.7	2.6	17.3	30.6	26.0	85.2
1996 January	6.6	10.0	4.2	4.3	14.3	2.1	16.4	30.3	26.2	87.3
Attending school or a tertiary institution full time										
1993 January	0.9	5.1	0.5	2.0	7.0	10.8	17.8	28.6	11.2	39.3
1995 January	1.1	5.9	0.6	2.1	8.0	7.7	15.7	26.3	13.4	51.0
1995 November	0.1	6.3	0.5	1.7	8.0	13.9	21.9	21.3	7.8	36.5
December	0.5	5.9	0.6	1.7	7.6	9.1	16.7	22.4	10.2	45.5
1996 January	0.7	6.7	0.4	1.7	8.4	9.3	17.7	20.2	9.6	47.5
Total										
1993 January	8.0	15.2	4.8	6.5	21.7	13.2	34.9	30.1	18.6	62.1
1995 January	7.3	16.0	5.6	7.4	23.4	10.6	34.1	31.6	21.7	68.8
1995 November	6.8	15.1	2.3	3.7	18.8	15.1	34.0	19.6	10.9	55.4
December	7.5	16.1	4.9	6.2	22.3	11.7	34.0	27.9	18.2	65.7
1996 January	7.2	16.6	4.6	6.0	22.7	11.3	34.0	26.7	17.6	66.6

¹ Persons aged 15-19 years.² For explanation of terms and concepts, refer to *The Labour Force, Australia*, ABS catalogue number 6203.0.
(Source: Labour Force Estimates—unpublished data.)

6

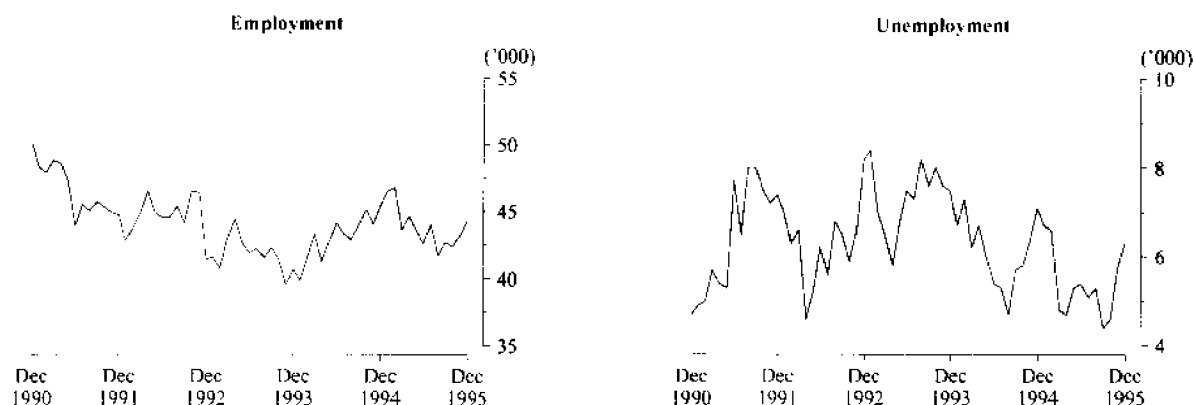
LABOUR FORCE STATUS, BY REGION AND TASMANIA, PERSONS^{1, 2}

Month		Total employed '000	Total unemployed '000	Unemployment rate %	Participation rate %
Hobart and Southern statistical divisions					
1992	December	95.9	13.8	12.6	61.4
1994	December	100.2	11.0	9.9	61.8
1995	October	103.3	8.7	7.7	61.4
	November	100.5	10.9	9.8	61.1
	December	102.3	10.9	9.7	62.1
Northern statistical division					
1992	December	55.5	7.0	11.3	60.0
1994	December	53.2	7.0	11.6	58.9
1995	October	54.6	5.8	9.7	59.9
	November	55.7	6.3	10.2	62.2
	December	59.3	6.8	10.3	64.0
Mersey-Lyell statistical division					
1992	December	41.6	8.2	16.6	62.3
1994	December	45.4	7.1	13.6	62.1
1995	October	42.4	4.6	9.8	55.9
	November	43.2	5.7	11.7	57.0
	December	44.3	6.3	12.5	61.5
Tasmania					
1992	December	192.9	29.0	13.1	61.2
1994	December	198.8	25.1	11.2	61.1
1995	October	200.4	19.1	8.7	59.7
	November	199.4	22.9	10.3	60.4
	December	205.9	24.1	10.5	62.5

¹ For explanation of terms and concepts, refer to *The Labour Force, Australia*, ABS catalogue number 6203.0.

² Data in this table are original series, i.e. they are not part of a seasonally adjusted or a trend series. Accordingly, care should be exercised when using this data. New monthly data from each quarter (March, June, September and December) is published two months after the quarter. (Source: Labour Force Estimates—microfiche tables.)

Mersey-Lyell Statistical Division—Persons



ALL EMPLOYED PERSONS, OCCUPATION, TASMANIA¹

	February 1995	February 1996		Proportion of total employed		
	Persons	Males	Females	Persons	February 1995	February 1996
Occupation	'000	'000	'000	'000	%	%
Managers and administrators	19.5	13.5	4.3	17.8	10.0	8.8
Farmers and farm managers	7.1	4.5	1.3	5.9	3.7	2.9
Managing supervisors	7.2	4.1	1.8	5.9	3.7	2.9
Other	5.2	4.9	1.2	6.0	2.7	3.0
Professionals	21.9	14.9	10.0	24.9	11.3	12.3
Building and professional engineers	2.2	2.0	—	2.0	1.1	1.0
Health diagnosis and treatment practitioners	3.5	1.4	1.4	2.8	1.8	1.4
School teachers	6.4	2.0	3.0	5.0	3.3	2.5
Business professionals	2.9	3.8	1.9	5.7	1.5	2.8
Other	6.9	5.7	3.7	9.4	3.6	4.6
Para-professionals	13.9	7.1	6.0	13.1	7.2	6.5
Engineering and building associates and technicians	1.7	1.8	—	1.8	0.9	0.9
Registered nurses	4.8	0.4	4.9	5.3	2.5	2.6
Other	7.4	4.9	1.1	6.0	3.8	3.0
Tradespersons	28.3	26.9	2.8	29.7	14.6	14.6
Metal fitting and machining tradespersons	2.2	2.6	—	2.6	1.1	1.3
Electrical and electronics tradespersons	4.5	5.0	—	5.0	2.3	2.5
Building tradespersons	6.9	6.9	0.1	7.0	3.6	3.4
Other	14.7	12.4	2.7	15.1	7.6	7.4
Clerks	30.4	8.8	24.2	33.0	15.6	16.3
Stenographers and typists	4.0	0.3	3.0	3.3	2.1	1.6
Receptionists, telephonists and messengers	4.8	1.1	4.8	5.9	2.5	2.9
Other	21.6	7.4	16.4	23.8	11.1	11.7
Salespersons and personal service workers	33.1	10.9	23.9	34.7	17.0	17.1
Sales representatives	2.3	1.8	1.1	2.8	1.2	1.4
Sales assistants	15.0	5.5	12.4	17.9	7.7	8.8
Other	15.8	3.6	10.4	14.0	8.1	6.9
Plant and machine operators, and drivers	16.0	14.6	1.9	16.5	8.2	8.1
Road and rail transport drivers	7.0	5.2	0.3	5.5	3.6	2.7
Machine operators	4.5	3.5	1.6	5.1	2.3	2.5
Other	4.5	5.9	—	5.9	2.3	2.9
Labourers and related workers	31.2	21.2	12.1	33.3	16.1	16.4
Trades assistants and factory hands	4.8	3.2	1.3	4.5	2.5	2.2
Agricultural labourers and related workers	7.0	5.7	2.3	8.0	3.6	3.9
Cleaners	6.3	1.8	5.4	7.2	3.2	3.5
Construction and mining labourers	3.0	2.9	0.1	3.0	1.5	1.5
Other	10.0	7.6	3.0	10.6	5.1	5.2
Total employed	194.3	117.9	85.2	203.0	100.0	100.0

¹ For explanation of terms and concepts, refer to *The Labour Force, Australia*, ABS catalogue number 6203.0. (Source: Labour Force Estimates—unpublished data.)

9

EMPLOYED WAGE AND SALARY EARNERS, SECTOR AND INDUSTRY, TASMANIA¹

Industry	Number of employees ('000) February 1995					Percentage distribution	
	Private and public					February 1993	February 1995
	Private	Public	Males	Females	Persons		
Agriculture, forestry, fishing and hunting	n.a.	0.7	n.a.	n.a.	n.a.	n.a.	n.a.
Mining	1.5	—	1.4	0.1	1.5	1.7	1.1
Manufacturing	20.3	0.1	15.4	4.9	20.4	14.8	15.2
Electricity, gas and water, construction	6.0	2.7	7.6	1.0	8.7	6.8	6.5
Wholesale and retail trade	26.0	—	15.0	11.0	26.1	20.8	19.4
Transport and storage	3.6	1.5	4.1	1.1	5.2	4.1	3.9
Communication	—	2.3	1.8	0.6	2.3	1.6	1.7
Finance, property and business services	10.1	0.9	4.9	6.0	10.9	9.3	8.1
Public administration and defence	—	10.5	6.5	4.0	10.5	7.0	7.8
Community services	14.0	23.4	11.9	25.5	37.4	24.9	27.8
Recreation, personal and other services	10.2	0.6	4.1	6.7	10.8	8.4	8.0
Total all industries	91.8	42.6	73.2	61.2	134.4	100.0	100.0

¹ For explanation of terms and concepts, refer to *Employed Wage and Salary Earners, Australia*, catalogue number 6248.0.
(Source: *Employed Wage and Salary Earners*, ABS catalogue number 6248.0.)

10

AVERAGE HOURS WORKED, TASMANIA

Month	Average weekly total hours worked, all employed persons ¹			Average weekly overtime hours ²		Percentage of employees working overtime ²
	Males	Females	Persons	Per employee	Per employee working overtime	
1992						
November	37.8	25.8	32.7	1.0	7.5	13.6
1994						
November	39.8	27.2	34.5	1.2	6.9	16.7
1995						
February	37.5	26.0	32.7	1.1	6.6	15.8
May	39.6	27.8	34.5	0.9	5.9	14.5
August	40.9	29.6	36.0	0.8	5.7	14.4
November	39.7	26.5	33.9	0.9	6.4	14.7

¹ For explanation of terms and concepts, refer to *The Labour Force, Australia*, ABS catalogue number 6203.0.

² For explanation of terms and concepts, refer to *Job Vacancies and Overtime, Australia*, ABS catalogue number 6354.0.

11

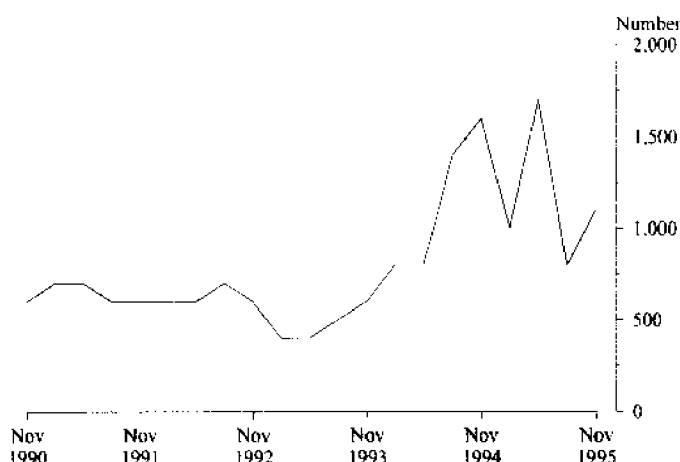
JOB VACANCIES, TASMANIA¹

Period	Number	Rate ² %
1992		
November	600	0.4
1994		
November	1 600	1.1
1995		
February	1 000	0.7
May	1 700	1.1
August	800	0.6
November	1 100	0.7

¹ For explanation of terms and concepts refer to *Job Vacancies and Overtime, Australia*, catalogue number 6354.0.

² Job vacancies are expressed as a percentage of the number of job vacancies divided by the number of employees plus job vacancies.

JOB VACANCIES Tasmania



12

INDUSTRIAL DISPUTES, TASMANIA¹

Month	Working days lost	Twelve months ending	Working days lost per thousand employees
1994		1994	
December	1 500	December	29
1995		1995	
January	400	January	31
February	300	February	31
March	500	March	34
April	100	April	30
May	200	May	31
June	700	June	35
July	800	July	38
August	100	August	33
September	100	September	30
October	0	October	30
November	100	November	30
December	200	December	22

Twelve months ended 1995

December 3 500

¹ For explanation of terms and concepts, refer to *Industrial Disputes, Australia*, ABS catalogue number 6321.0.

13

AVERAGE WEEKLY EARNINGS OF EMPLOYEES, TASMANIA^{1, 2} (\$)

		Males			Females			Persons		
		Full-time adults		All males	Full-time adults		All females	Full-time adults		All employees
Quarter	Survey reference period	Weekly ordinary time earnings	Weekly total earnings	Weekly total earnings	Weekly ordinary time earnings	Weekly total earnings	Weekly total earnings	Weekly ordinary time earnings	Weekly total earnings	Weekly total earnings
Original										
1994										
December	18 November	634.50	677.90	600.90	541.90	557.60	396.00	603.00	636.90	501.20
1995										
March	17 February	627.80	668.50	601.70	542.50	554.00	393.50	600.10	631.30	502.70
June	19 May	635.70	678.60	608.80	546.50	556.90	385.60	606.40	638.60	500.70
September	18 August	634.60	675.50	598.70	544.50	555.10	384.80	604.20	634.80	495.60
December	17 November	647.90	687.90	615.50	556.10	569.00	403.20	617.30	648.20	513.80
Trend										
1994										
December	18 November	630.90	672.40	598.30	535.50	548.60	392.30	598.40	629.90	498.50
1995										
March	17 February	631.70	673.00	599.40	542.00	554.20	388.70	601.70	633.30	498.00
June	19 May	633.80	675.10	603.90	546.40	557.40	389.10	604.80	636.40	500.50
September	18 August	638.60	680.50	609.70	549.10	560.30	393.00	609.00	640.70	505.10
December	17 November	644.90	687.80	616.30	552.50	565.10	399.80	614.40	646.70	511.30

¹ For explanation of terms and concepts, refer to *Average Weekly Earnings, States and Australia* (Catalogue No. 6302.0).

² Prior to September 1995 only the original series appeared in this table.

(Source: *Average Weekly Earnings, States and Australia*, ABS catalogue number 6302.0.)

14

WEEKLY AWARD RATES OF PAY INDEXES, FULL-TIME ADULT EMPLOYEES, TASMANIA¹

(Base: June 1985 = 100.0)

Industry	1993	1995	1995	1996
	January	January	November	January
Mining	137.7	137.7	137.7	137.7
Manufacturing	145.0	147.3	149.4	149.6
Electricity, gas and water	130.9	133.6	136.4	136.4
Construction	141.2	142.6	143.9	143.9
Wholesale trade	137.2	139.9	142.7	142.7
Retail trade	136.5	139.7	142.7	142.7
Transport and storage	137.9	139.1	143.1	143.1
Communication	135.4	135.4	135.4	135.4
Finance, property and business services	137.4	137.5	138.1	139.5
Public administration and defence	134.6	150.2	153.4	153.4
Community services	140.2	143.6	144.6	144.6
Recreation, personal and other services	145.0	150.3	153.0	153.0
Total all industries	139.0	142.7	144.6	144.8

¹ For explanation of terms and concepts, refer to *Award Rates of Pay Indexes, Australia*, ABS catalogue number 6312.0.

(Source: *Award Rates of Pay Indexes, Australia*, ABS catalogue number 6312.0.)

15

SUMMARY OF ANNUAL MOVEMENTS IN WAGES AND PRICES, TASMANIA

Period	CPI. All groups Hobart	Price index of materials used in house building. All groups, Hobart	Price index of materials used in building other than house building. All groups, Hobart	Average weekly total earnings, full-time adult employees	Weekly award rates of pay index, full-time adult employees
Percentage change from previous year					
1993					
January	..	2.3	1.3	..	0.7
1995					
January	..	3.8	1.5	..	1.0
1995					
May	..	5.1	3.5	3.1	1.1
June	4.2	4.4	3.3	..	1.2
July	..	5.2	3.5	..	1.4
August	..	4.6	3.6	2.4	1.6
September	4.5	4.3	3.5	..	1.7
October	..	3.6	3.7	..	1.6
November	..	3.8	3.2	1.8	1.6
December	4.4	3.4	3.0	..	1.8
1996					
January	..	3.2	2.9	..	1.4

(Sources:

Consumer Price Index, ABS catalogue number 6401.0.

Price Index of Materials Used in House Building, ABS catalogue number 6408.0.

Price Index of Materials Used in Other than House Building, ABS catalogue number 6407.0.

Average Weekly Earnings, States and Australia, ABS catalogue number 6302.0.

Award Rates of Pay Indexes, Australia, ABS catalogue number 6312.0.)

16

HOUSE PRICE INDEX NUMBERS¹, HOBART

(Base of each Index: 1989-90 = 100.0)

	Established house price index		Project home price index	
	Index	% change ²	Index	% change ²
1992-93	116.6	4.1	114.1	3.6
1993-94	122.5	5.1	117.7	3.2
1994-95	129.0	5.3	121.3	3.1
1993				
December	121.4	1.4	116.9	0.1
1994				
March	123.0	1.3	117.8	0.8
June	126.0	2.4	119.4	1.4
September	128.2	1.7	120.1	0.6
December	128.2	0.0	120.5	0.3
1995				
March	129.4	0.9	121.6	0.9
June	130.1	0.5	123.1	1.2
September	129.2	- 0.7	123.5	0.3
December	129.1	- 0.1	123.5	0.0

¹ Used in calculating the mortgage interest charges component of the Consumer Price Index.

² Percentage change over previous period.

(Source: House Price Indexes: Eight Capital Cities, ABS catalogue number 6416.0)

17

CONSUMER PRICE INDEX: HOBART AND EIGHT CAPITAL CITIES COMBINED^{1, 2}

(Base of each index: year 1989-90 = 100.0)

Period	Hobart					
	Food	Clothing	Housing ³	Household equipment and operation	Transportation	Tobacco and alcohol
1993						
September	110.2	106.9	94.9	111.3	111.6	132.1
December	111.7	106.8	93.4	111.8	112.3	133.4
1994						
March	112.6	106.4	93.3	112.2	111.9	134.3
June	112.2	106.4	94.2	112.4	112.8	134.8
September	113.9	106.6	94.8	112.8	113.9	137.2
December	113.3	105.3	97.6	113.9	115.0	139.1
1995						
March	115.4	105.0	102.7	114.9	115.1	140.3
June	116.1	106.1	104.5	115.4	117.2	143.1
September	117.3	105.9	106.0	116.5	119.4	144.3
December	117.1	105.6	106.5	117.5	120.1	145.9

17

CONSUMER PRICE INDEX: HOBART AND EIGHT CAPITAL CITIES COMBINED^{1, 2} (continued)

(Base of each index: year 1989-90 = 100.0)

Period	Hobart				Weighted average of eight capital cities ³	
	Health and personal care	Recreation and education	All groups	% change over previous period	Index	% change over previous period
1993						
September	134.5	108.7	111.0	+ 1.5	109.8	+ 0.5
December	134.5	111.0	111.6	+ 0.5	110.0	+ 0.2
1994						
March	137.5	109.7	111.9	+ 0.3	110.4	+ 0.4
June	137.9	111.3	112.4	+ 0.4	111.2	+ 0.7
September	138.7	111.7	113.3	+ 0.8	111.9	+ 0.6
December	138.7	113.0	114.2	+ 0.8	112.8	+ 0.8
1995						
March	140.4	115.4	116.1	+ 1.7	114.7	+ 1.7
June	141.0	114.0	117.1	+ 0.9	116.2	+ 1.3
September	146.7	113.3	118.4	+ 1.1	117.6	+ 1.2
December	146.9	115.8	119.2	+ 0.7	118.5	+ 0.8

¹ Further information on construction of CPI indexes is contained in the bulletin *The Australian Consumer Price Index Concepts, Sources and Methods* (Catalogue No. 6461.0).

² The CPI is now published on a reference base of 1989-90 = 100.0.

³ Series from and including March 1989 has been affected by the change in treatment of mortgage interest charges.

(Source: *Consumer Price Index*, ABS catalogue number 6401.0.)

18

PRICE INDEX OF MATERIALS USED IN BUILDING OTHER THAN HOUSE BUILDING: HOBART

(Base year: 1989-90 = 100.0)

Period	Index numbers for selected major building materials					
	Structural timber	Clay bricks	Ready mixed concrete	Precast concrete products	Steel decking, cladding etc.	Structural steel
1994						
November	123.8	115.6	117.7	122.4	107.7	116.0
December	124.1	115.8	117.7	122.5	107.7	116.0
1995						
January	124.1	118.0	117.0	122.5	107.5	116.0
February	124.1	118.0	117.1	122.5	108.3	116.0
March	125.6	118.0	116.9	122.5	107.5	116.0
April	125.8	118.0	117.0	122.5	107.1	116.0
May	125.8	118.0	118.3	122.5	107.5	117.0
June	125.8	118.1	118.0	122.5	107.5	119.6
July	124.9	118.1	117.1	130.3	110.7	119.6
August	122.0	118.1	117.0	130.3	110.7	119.6
September	122.1	123.2	116.7	130.3	111.0	119.6
October	119.7	123.2	117.2	130.3	111.0	120.9
November p	120.1	123.2	116.3	130.3	111.0	120.9
December p	120.1	123.3	114.5	130.4	111.0	121.9
1996						
January p	120.1	123.3	116.9	130.4	111.0	121.9

18

PRICE INDEX OF MATERIALS USED IN BUILDING OTHER THAN HOUSE BUILDING: HOBART (continued)

(Base year: 1989-90 = 100.0)

Period	Index numbers for selected major building materials						
	Reinforcing steel bar, fabric and mesh	Aluminium windows	Fabricated steel products	Builders' hardware	Sand & aggregate	Paint & other coatings	Non-ferrous pipes & fittings
1994							
November	107.2	99.6	106.1	110.7	133.1	117.0	170.5
December	107.2	99.6	106.1	110.6	133.1	116.7	175.2
1995							
January	107.2	100.3	106.1	111.0	133.1	116.0	181.5
February	106.0	101.8	107.1	115.5	133.1	116.9	183.3
March	105.9	103.3	107.6	114.2	133.1	114.7	183.3
April	105.9	104.5	107.6	114.6	133.1	114.7	183.2
May	105.9	104.5	107.6	114.6	133.1	115.5	186.0
June	105.7	104.5	107.6	118.1	133.1	114.9	183.3
July	107.0	104.5	107.6	118.9	133.1	116.3	184.9
August	107.4	104.5	107.7	118.9	133.1	119.5	184.4
September	109.2	104.5	107.6	120.4	133.1	118.9	169.0
October	109.2	104.5	108.3	120.7	133.1	118.9	169.1
November p	109.2	104.5	108.3	119.2	133.1	118.7	169.1
December p	109.2	104.5	108.3	117.7	133.1	121.4	169.1
1996							
January p	109.2	104.5	108.3	118.3	133.1	121.5	169.1

(Source: Price Index of Materials Used in Other than House Building, ABS catalogue number 6407.0.)

18

PRICE INDEX OF MATERIALS USED IN BUILDING OTHER THAN HOUSE BUILDING: HOBART (continued)

(Base year: 1989-90 = 100.0)

Period	Index numbers for special combinations of building materials					
	All electrical materials		All mechanical services		All plumbing materials	
	Index	% change over previous period	Index	% change over previous period	Index	% change over previous period
1994						
November	108.8	+ 1.2	112.4	+ 1.0	123.9	+ 1.9
December	110.0	+ 1.1	112.2	- 0.2	125.8	+ 1.5
1995						
January	110.7	+ 0.6	112.7	+ 0.4	127.5	+ 1.4
February	112.8	+ 1.9	113.4	+ 0.6	128.4	+ 0.7
March	113.1	+ 0.3	113.6	+ 0.2	128.3	- 0.1
April	114.7	+ 1.4	114.4	+ 0.7	128.4	+ 0.1
May	115.2	+ 0.4	113.9	- 0.4	128.9	+ 0.4
June	116.7	+ 1.3	114.0	+ 0.1	129.4	+ 0.4
July	117.9	+ 1.0	114.1	+ 0.1	129.7	+ 0.2
August	118.9	+ 0.8	114.0	- 0.1	129.9	+ 0.2
September	118.9	0.0	113.3	- 0.6	126.6	- 2.5
October	118.7	0.2	115.2	+ 1.7	127.4	+ 0.6
November p	118.7	0.0	114.7	- 0.4	127.4	0.0
December p	118.5	- 0.2	114.8	+ 0.1	127.5	+ 0.1
1996						
January p	117.8	- 0.6	114.8	0.0	127.5	0.0

18

PRICE INDEX OF MATERIALS USED IN BUILDING OTHER THAN HOUSE BUILDING: HOBART (continued)

(Base year: 1989-90 = 100.0)

Period	Index numbers for special combinations of building materials			
	All groups excluding electrical materials and mechanical services		All groups	
	Index	% change over previous period	Index	% change over previous period
1994				
November	112.1	- 0.1	111.7	+ 0.3
December	112.2	+ 0.1	111.8	+ 0.1
1995				
January	112.4	+ 0.2	112.0	+ 0.2
February	112.7	+ 0.3	112.5	+ 0.4
March	113.0	+ 0.3	112.8	+ 0.3
April	113.6	+ 0.5	113.5	+ 0.6
May	114.1	+ 0.4	113.8	+ 0.3
June	114.6	+ 0.4	114.2	+ 0.4
July	115.1	+ 0.4	114.7	+ 0.4
August p	115.3	+ 0.2	114.9	+ 0.2
September p	115.5	+ 0.2	114.9	0.0
October p	115.8	+ 0.3	115.5	+ 0.5
November p	115.7	- 0.1	115.3	0.2
December p	115.5	- 0.2	115.1	- 0.2
1996				
January p	115.9	+ 0.3	115.3	+ 0.2

(Source: Price Index of Materials Used in Other than House Building, ABS catalogue number 6407.0.)

20

LIVESTOCK SLAUGHTERING, TASMANIA: NUMBERS ('000)

Year or month	Cattle			Sheep	Lambs	Pigs
	Bulls, bullocks and steers	Cows and heifers	Calves			
1992-93	99.0	90.4	32.7	473.4	456.5	92.5
1993-94	101.8	85.2	23.2	526.1	437.8	95.8
1994-95	111.0	96.9	29.2	569.3	477.2	92.9
1994						
January	8.7	6.1	0.0	50.1	34.1	6.6
1995						
January p	11.3	7.9	0.1	50.1	40.7	5.8
February p	9.5	8.5	0.1	58.6	37.1	7.0
March p	13.0	12.0	0.4	68.6	48.3	8.8
April p	9.5	9.8	1.0	46.3	41.1	7.2
May p	10.9	10.3	1.2	43.6	41.1	8.2
June p	10.5	10.3	0.9	42.8	44.8	8.6
July p	8.1	5.8	1.1	18.6	25.6	6.5
August p	5.0	4.8	14.0	18.2	27.3	7.3
September p	5.6	4.4	16.6	18.0	29.0	7.1
October p	7.0	6.3	5.3	25.5	28.6	6.1
November p	8.8	7.1	0.8	36.5	34.9	6.9
December p	9.5	7.6	0.5	44.8	40.5	8.4
1996						
January p	11.2	6.8	0.1	43.6	38.9	6.1

(Source: *Livestock Products, Australia*, ABS catalogue number 7215.0.)

21

LIVESTOCK SLAUGHTERING, TASMANIA: SEASONALLY ADJUSTED AND TREND SERIES¹

Month	Seasonally adjusted			Trend series ²		
	Cattle and calves	Sheep and lambs	Pigs	Cattle and calves	Sheep and lambs	Pigs
1994						
January	16 701	72 573	8 614	17 667	75 516	8 023
1995						
January	20 534	77 095	7 495	21 123	85 078	7 776
February	19 262	76 222	8 127	20 882	80 535	7 863
March	23 121	82 726	7 861	20 392	77 374	7 887
April	19 415	76 642	7 854	19 866	74 956	7 813
May	16 606	65 912	8 157	19 583	72 941	7 663
June	22 169	84 710	7 369	19 683	71 181	7 471
July	17 354	59 612	6 336	20 058	69 801	7 247
August	21 630	69 409	7 497	20 395	69 320	7 061
September	22 471	68 662	7 430	20 583	70 051	6 951
October	20 232	73 748	6 656	20 447	71 296	6 913
November	19 025	69 799	6 552	20 072	72 521	6 926
December	19 969	81 233	6 720	19 600	73 378	6 978
1996						
January	18 587	69 383	7 675	19 362	75 079	7 072

¹ This data has been revised to take account of the latest seasonal factor.

² Trend estimates may be revised as data for later months become available.

(Source: unpublished data.)

19 MISCELLANEOUS INDICATORS OF PRODUCTION, TASMANIA

Year or month	Dairy products ¹			Staff-hours worked ²	
	Whole milk ⁴	Factory butter ⁵	Factory cheese	Textile manufacturing ⁶	Vegetable preserving
	million litres	tonnes	tonnes	'000	'000
1992-93	412.9	6 287	20 043	1 740	1 915
1993-94	447.3	7 846	22 461	1 575	2 002
1994-95	436.5	8 074	20 529	1 527	1 838
1992					
December	52.9	651	2 675	104	107
1994					
December	61.6	963	3 735	111	181
1995					
October	68.4	936	3 096	142	110
November	69.8	1 124	3 214	136	142
December	65.4	988	3 454	104	126

19 MISCELLANEOUS INDICATORS OF PRODUCTION, TASMANIA (continued)

Year or month	Newsprint ⁷	Refined zinc	Metal, refin. index ³	Electricity	Gas
	'000 tonnes	'000 tonnes		million kW.h	'000 MJ
1992-93	228.4	212.0	109.4	8 864	61 432
1993-94	208.9	193.8	105.5	8 855	55 767
1994-95	222.7	189.8	98.3	8 688	51 933
1992					
December	20.9	15.9	104.0	673	3 783
1994					
December	16.7	15.2	98.6	664	3 160
1995					
October	19.9	18.2	106.9	757	3 372
November	20.9	18.5	101.0	710	2 978
December	19.9	18.6	109.1	706	2 525

¹ Source: Australian Dairy Corporation.

² Changing productivity per staff-hour makes these indicators unsatisfactory for long-term comparisons.

³ Metallurgical refining index (Base: 1979-80 = 100.0) Output from selected establishments covering the smelting and refining of ferro-alloys, zinc and aluminium. The weighting pattern is based on the establishments' value added as derived from the 1979-80 Manufacturing Census. For multi-product establishments, value added was apportioned to products on the basis of gross receipts from each product.

⁴ Includes the whole milk equivalent of farm cream intake.

⁵ Includes butter equivalent of butter oil.

⁶ Includes spinning, weaving and carpet making. Reported by establishments which manufacture textiles only, or manufacture clothing and textiles in the one plant.

⁷ Excludes production of directory newsprint and high grade specialty paper.
(Source: ABS unpublished data.)

22

MEAT PRODUCTION, TASMANIA (tonnes)

Year or month	Meat (carcass weight)					
	Beef	Veal	Mutton	Lamb	Pigmeat ¹	Total
1992-93	44 925	692	8 949	7 456	5 749	67 770
1993-94	47 458	515	9 992	7 047	6 019	71 031
1994-95	49 827	1 059	11 230	8 412	5 982	76 511
1994						
January	3 966	1	959	550	414	5 891
1995						
January p	4 787	11	969	681	381	6 829
February p	4 547	8	1 130	615	464	6 763
March p	5 931	18	1 311	808	572	8 641
April p	4 370	36	884	689	464	6 444
May p	4 881	39	895	761	532	7 108
June p	4 864	38	877	829	553	7 161
July p	3 569	30	389	481	426	4 895
August p	2 312	353	378	514	475	4 031
September p	2 354	418	372	546	470	4 161
October p	3 151	141	529	540	399	4 761
November p	3 846	24	797	659	449	5 775
December p	4 145	17	983	764	546	6 456
1996						
January	4 467	4	937	733	397	6 538

¹ Includes pork used for production of bacon and ham.

(Source: *Livestock Products, Australia*, ABS catalogue number 7215.0.)

23

PRINCIPAL MINERAL CONCENTRATES PRODUCED, TASMANIA ('000 tonnes)

Year or quarter	Concentrate							
	Copper	Iron (pellets)	Iron pyrite	Lead	Lead-copper	Lead-zinc	Tin	Zinc
1992-93	107.6	1 458.9	94.5	90.7	1.2	69.5	12.1	454.3
1993-94	128.1	1 565.9	87.9	93.4	0.0	57.5	13.4	316.5
1994-95	59.4	1 483.8	22.9	97.4	0.0	45.3	14.3	350.6
1994								
June	37.0	432.7	22.9	23.2	0.0	14.0	3.3	86.5
September	28.3	396.9	22.9	28.6	0.0	11.1	3.1	90.2
December	23.3	369.9	0.0	23.9	0.0	8.9	3.7	83.7
1995								
March	3.4	301.3	0.0	18.4	0.0	9.6	3.2	90.5
June	3.9	415.8	0.0	26.5	0.0	15.8	4.2	86.2
September	4.5	463.0	0.0	21.9	0.0	11.2	4.1	93.6

(Source: *Tasmania—Development and Resources*)

24

SAWMILLS AND PLYWOOD MILLS: LOGS DELIVERED AND TIMBER PRODUCED, TASMANIA ('000 m³)

Year or quarter	Tasmanian-grown logs delivered					Sawn, peeled and sliced timber produced ¹				
	Hardwoods		Softwoods			Hardwoods		Softwoods		
	Eucalypts	Other hardwoods ²	Plantation ³	Natives ⁴	Total	Eucalypts	Other hardwoods ²	Plantation ³	Natives ⁴	Total
1992-93	554.5	13.0	312.8	2.8	883.2	188.9	2.9	131.6	0.7	324.1
1993-94	584.3	15.3	299.2	1.5	900.4	203.5	3.1	141.0	0.5	348.0
1994-95	653.1	12.6	304.9	2.8	973.4	212.5	4.3	142.7	0.6	360.1
1993										
December	132.6	3.8	70.2	0.3	206.9	50.5	0.7	35.1	0.1	86.4
1994										
March	140.0	5.0	77.4	0.4	222.8	46.5	0.6	38.1	0.1	85.3
June	149.4	4.5	76.1	0.4	230.4	52.1	1.1	34.1	0.2	87.5
September	170.2	3.8	76.3	0.6	250.9	59.5	1.2	35.1	0.1	95.9
December	163.0	3.7	68.8	0.3	235.8	55.2	1.0	36.1	0.2	92.5
1995										
March	132.3	3.0	82.5	1.1	218.9	44.5	1.0	37.0	0.1	82.6
June	187.6	2.1	77.4	0.7	267.8	53.4	1.1	34.6	0.1	89.2
September	182.6	1.7	79.6	0.2	264.2	54.4	1.3	35.8	0.1	91.6
December	137.8	1.4	69.9	0.2	209.4	48.1	1.0	35.8	0.2	85.2

¹ Includes plywood, veneer and sliced timber production converted to an equivalent cubic measurement.

² Includes blackwood, myrtle, sassafras etc.

³ Radiata pine.

⁴ Includes Huon pine, celery top pine and King William pine.

(Source: ABS unpublished data.)

25

CHIPPING AND GRINDING OF WOOD¹, TASMANIA

Year or quarter	Materials used ('000 m ³) ³				Chipped and ground wood production ('000 tonnes green weight)
	Producing locations (no.) ²	Logs delivered ⁴	Sawmill offcuts		
1992-93	31	3 350.6	295.8		3 565.8
1993-94	30	3 448.8	339.8		3 726.1
1994-95	31	4 064.1	394.2		4 343.1
1993					
December	31	818.5	96.9		885.8
1994					
March	31	818.3	71.3		868.3
June	30	841.6	83.3		944.0
September	30	939.8	86.3		991.3
December	31	1 065.8	92.0		1 115.4
1995					
March	31	1 090.6	95.7		1 177.1
June	31	967.9	120.1		1 059.3
September	31	935.6	118.2		1 044.1
December	31	932.1	104.6		939.9

¹ Both hardwoods and softwoods, separate details are not available.

² Capable of producing at end of year or actually producing during quarter.

³ Data reported by weight, converted to cubic measure by the factor 0.95 m³ per tonne.

⁴ Includes log equivalent of timbwood and billets.

(Source: ABS unpublished data.)

26

LOGS DELIVERED FOR MILLING OR CHIPPING, TASMANIA ('000 m³)

Year or quarter	Sawmilling and plywood milling			Chipping and grinding ¹			Total		
	Crown land ²	Private land	Total	Crown land ²	Private land	Total	Crown land ²	Private land	Total
1992-93	698.9	184.3	883.2	1 753.4	1 597.2	3 350.6	2 452.3	1 781.5	4 233.7
1993-94	696.5	203.9	900.4	1 697.0	1 751.8	3 448.8	2 393.5	1 955.7	4 349.2
1994-95	780.3	193.2	973.4	1 966.8	2 097.3	4 064.1	2 747.1	2 290.4	5 037.6
1993									
December	161.7	45.2	206.9	417.5	401.0	818.5	579.2	446.2	1 025.4
1994									
March	170.9	51.9	222.8	393.7	424.6	818.3	564.6	476.5	1 041.1
June	182.2	48.3	230.4	397.7	443.9	841.6	579.9	492.2	1 072.0
September	199.8	51.1	250.9	481.0	458.8	939.8	680.8	509.9	1 190.7
December	180.6	55.2	235.8	467.9	597.8	1 065.8	648.5	653.0	1 301.6
1995									
March	184.7	34.2	218.9	480.3	610.3	1 090.6	665.0	644.5	1 309.5
June	215.2	52.7	267.8	537.6	430.3	967.9	752.8	483.0	1 235.8
September	212.5	51.7	264.2	438.2	497.4	935.6	650.6	549.2	1 199.8
December	163.9	45.4	209.4	388.3	543.8	932.1	552.2	589.3	1 141.5

¹ Logs used are generally below sawmilling standard; includes log equivalent of limbwood and billets.

² Comprises all areas (including concession areas) from which royalties are payable to Forestry Tasmania.
(Source: ABS unpublished data.)

27

BUILDING APPROVALS, TASMANIA

New residential building									
Year or month	No. of houses	No. of other residential buildings ³	Total no. of dwelling units	Value of total dwelling units \$'000	Con-versions etc. no.	Value of alter-ations and additions ¹ to residential building \$'000	Value of non-residential building ²		Total value of building \$'000
							Private \$'000	Total \$'000	
1992-93	2 956	1 138	4 094	275 262	n.a.	33 050	62 416	103 107	411 419
1993-94	3 113	1 034	4 147	301 963	11	39 522	81 251	145 922	487 407
1994-95	2 576	596	3 172	244 623	14	39 963	117 984	161 567	446 152
1993									
January	196	115	311	21 677	—	2 656	5 462	10 866	35 199
1995									
January	178	40	218	17 293	—	2 868	5 391	13 761	33 921
October	175	49	224	18 151	1	3 212	13 183	16 512	37 875
November	198	9	207	18 496	1	3 314	5 701	1 042	32 651
December	145	74	219	18 832	—	2 643	13 277	13 597	35 072
1996									
January	135	92	227	23 749	1	3 199	18 028	42 277	69 225

¹ Valued at \$10,000 and over.

² Comprises non-residential building (new plus alterations and additions) valued at \$30,000 and over from July 1988, and valued at \$50,000 and over from July 1990. Previous figures are for values of \$10,000 and over.

³ New individual dwelling units (e.g. flats, home units and villa units).
(Source: *Building Approvals, Tasmania*, ABS catalogue number 8731.6.)

28

DWELLING COMMENCEMENTS, TASMANIA

New residential building								
Year or month	No. of houses						No. of other residential buildings ¹	Total no. of dwelling units
	Double brick	Brick veneer	Fibre cement	Timber	Other and not stated	Total houses		
1992-93	277	1 933	103	447	65	2 825	1 129	3 954
1993-94	306	2 120	103	441	79	3 049	973	4 022
1994-95	132	1 816	93	402	62	2 505	645	3 150
1992								
December	25	147	15	41	9	237	86	323
1994								
December	6	116	6	36	6	170	39	209
1995								
September	8	140	11	34	1	194	47	241
October	18	129	9	24	4	184	35	219
November	17	117	7	33	5	179	26	205
December	13	101	4	22	7	147	7	154

¹ New individual dwelling units (e.g. flats, home units and villa units).

(Source: *Dwelling Unit Commencements Reported by Approving Authorities, Tasmania*, ABS catalogue number 8741.6.)

29

BANKING STATISTICS, TASMANIA^{1, 2} (\$m)

Month	Deposits				
	Current bearing interest	Current – not bearing interest	Fixed	Investment savings accounts	Statement savings accounts
1995					
January	553	298	1 520	600	194
February	549	293	1 539	588	191
March	547	301	1 565	581	189
April	540	295	1 590	569	186
May	544	281	1 599	560	186
June	545	285	1 549	553	186
July	568	275	1 572	552	188
August	580	270	1 594	550	189
September	599	263	1 673	549	192
October	605	258	1 690	547	189
November	620	270	1 672	546	190
December	628	279	1 659	546	191
1996					
January	646	272	1 646	546	190

29

BANKING STATISTICS, TASMANIA^{1, 2} (\$m) (continued)

Month	Deposits — continued			Loans ³
	Passbook/School savings accounts	Other	Total	
1995				
January	219	150	3 533	4 027
February	214	149	3 524	4 058
March	209	152	3 544	4 098
April	204	146	3 531	4 115
May	203	132	3 505	4 131
June	199	132	3 449	4 166
July	198	128	3 480	4 231
August	194	130	3 507	4 276
September	191	131	3 596	4 304
October	189	132	3 609	4 298
November	185	129	3 612	4 349
December	177	127	3 607	4 374
1996				
January	175	127	3 601	4 372

¹ Due to changes to the *Banking Act* 1959 in December 1989, which removed the distinction between trading and savings banks, figures previously published in this table are no longer comparable with those shown above.

² Details are the averages of weekly figures for each month. The figures are derived from returns submitted by banks authorised under the *Banking Act* together with similar returns voluntarily submitted by the State banks; they exclude the Reserve Bank.

³ Excludes non-resident loans.

(Source: Reserve Bank of Australia.)

30

PRIVATE NEW CAPITAL EXPENDITURE BY TYPE OF ASSET, TASMANIA¹ (\$m)

Year or quarter	New buildings and structures	Equipment, plant, and machinery	Total
1992-93	104	342	446
1993-94	100	341	441
1994-95	133	503	636
1994			
June	53	120	173
September	28	76	103
December	19	129	147
1995			
March	46	129	175
June	41	170	211
September	51	95	146

¹ Estimates based on a sample survey and therefore subject to sampling variability. Covers selected industries only—mining, manufacturing, finance, property and other selected industries.

(Source: *State Estimates of Private New Capital Expenditure*, ABS catalogue number 5646.0.)

31 PASSENGER ARRIVALS AND DEPARTURES, TASMANIA¹

Period	Arrivals				Cruise ships		
	By air						
	Interstate	Inter-national	By sea	Total	Total departures ²	Arrivals	Departures
1991	625 366	5 897	131 375	762 638	764 731	6 720	6 663
1992	652 092	4 428	114 969	771 489	761 109	4 608	4 608
1993	694 244	5 144	115 381	814 769	814 835	2 033	2 033
1994	745 508	4 166	128 644	878 318	880 936	56 592	6 592
1994							
June	52 737	167	7 629	60 533	56 244	—	—
1995							
April	66 840	423	9 584	76 847	83 918	—	—
May	53 364	277	8 368	62 009	70 563	—	—
June	57 146	211	7 678	65 035	62 555	—	—

¹ The following persons are not included in these statistics: passengers under three years of age accompanied by an adult; passengers travelling on chartered flights with minor carriers; passengers travelling on private or VIP flights; and passengers from or departing for overseas other than direct flights to New Zealand.

² The proportion of departing passengers who were visitors was shown to be about 58% in the 1981 Tasmanian Visitor Survey, 55% in the 1984 Tasmanian Visitor Survey, about 53% in the 1986 Tasmanian Visitor Survey, almost 65% in the 1990 Tasmanian Visitor Survey, and almost 60% in the 1994 survey.

(Source: Department of Tourism, Sport and Recreation)

32 TOTAL PASSENGER ARRIVALS BY AIR AND SEA INTO TASMANIA

Period	Original	Seasonally adjusted ¹	Trend
1994			
June	60 533	72 016	74 142
1995			
April	76 847	71 159	76 845
May	62 009	78 682	76 906
June	65 035	78 253	77 221

¹ There is an annual recalculation of seasonal adjustment factors to include the most recent year's arrivals. This occurs at the end of each financial year and may cause revisions to previously published seasonally adjusted and trend figures. A full time series of seasonally adjusted and trend series from January 1971 is available on request, telephone (002) 20 5870.

(Source: Department of Tourism, Sport and Recreation. ABS unpublished data.)

33 ACCOMMODATION STATISTICS, TASMANIA

Hotels, motels, etc. with facilities

Period	Number of establishments	Guest rooms	Room nights		Room occupancy rate %	Takings from accommodation \$'000
			Seasonally adjusted	Trend estimates		
September quarter						
1993	190	5 266	n.a.	n.a.	38.5	12 878
1994	174	5 316			43.5	15 229
1995	179	5 452			42.1	15 501
1993						
July	n.a.	n.a.	79 536	79 100	34.8	3 820
August	n.a.	n.a.	78 720	80 070	34.4	3 770
September	190	5 266	81 258	81 331	46.5	5 288
1994						
July	n.a.	n.a.	92 055	90 208	40.6	4 711
August	n.a.	n.a.	90 459	89 745	38.5	4 443
September	174	5 316	91 388	88 951	51.6	6 074
1995						
July	n.a.	n.a.	92 641	90 333	39.2	4 866
August	n.a.	n.a.	92 331	91 118	38.6	4 687
September	179	5 452	90 259	91 949	48.7	5 948

Holiday units

Period	Number of establishments	Number of units	Unit nights		Unit occupancy rate %	Takings from accommodation \$'000
			Seasonally adjusted	Trend estimates		
September quarter						
1993	45	726	n.a.	n.a.	42.0	1 694
1994	53	804			42.5	2 044
1995	54	821			38.3	1 933
1993						
July	n.a.	n.a.	11 204	11 864	34.5	462
August	n.a.	n.a.	12 306	11 969	36.7	481
September	45	726	12 242	12 078	55.3	751
1994						
July	n.a.	n.a.	13 241	13 353	36.7	583
August	n.a.	n.a.	13 033	13 331	35.2	550
September	53	804	13 623	13 387	55.9	911
1995						
July	n.a.	n.a.	12 002	12 098	33.1	558
August	n.a.	n.a.	11 464	11 954	30.2	485
September	54	821	13 040	11 930	51.9	890

Caravan parks

Period		Number of establishments	Number of sites and cabins ¹	Site occupancy rate %	Takings from accommodation \$'000
September quarter					
1993		67	6 366	25.4	996
1994		75	6 924	25.8	1 036
1995		72	6 417	27.7	1 111
1993	July	n.a.	n.a.	24.4	273
	August	n.a.	n.a.	24.6	302
	September	67	6 366	27.4	421
1994	July	n.a.	n.a.	24.8	294
	August	n.a.	n.a.	25.2	303
	September	75	6 924	27.5	439
1995	July	n.a.	n.a.	26.7	310
	August	n.a.	n.a.	26.8	321
	September	72	6 417	29.5	480

¹At end of quarter.

(Source: Tourist Accommodation, ABS catalogue number 8635.6.)

34

REGISTRATIONS OF NEW MOTOR VEHICLES, TASMANIA¹

Year or month	Passenger vehicles	Other vehicles ²	Total (excl. motor cycles)	Vehicles registered by vehicle rental businesses ³	Motor cycles
1993	10 019	2 478	12 497	1 507	440
1994	10 543	2 837	13 380	1 708	376
1995	10 919	2 874	13 793	1 952	393
1994					
January	623	143	766	33	25
1995					
January	679	200	879	7	35
February	777	226	1 003	33	33
March	879	218	1 097	1	57
April	593	226	819	1	24
May	973	383	1 356	6	30
June	846	368	1 214	16	25
July	772	257	1 029	65	21
August	1 061	208	1 269	245	28
September	1 076	184	1 260	373	36
October	1 072	208	1 280	301	35
November	702	151	853	62	32
December	1 489	245	1 734	842	37
1996					
January p	670	201	871	5	36

¹ Includes State and Commonwealth Government-owned motor vehicles other than those belonging to the defence services. Excludes tractors, plant and equipment, caravans and trailers.

² Comprises utilities, panel vans, rigid and articulated trucks and other truck-type vehicles (i.e. motor vehicles designed for purposes other than freight carrying, e.g. campervans, tow trucks, ambulances and hearses) and buses.

³ These figures are included in previous columns.

(Source: *Motor Vehicle Registrations Australia*, ABS catalogue number 9301.0. ABS unpublished data.)

35

TURNOVER OF RETAIL ESTABLISHMENTS AT CURRENT PRICES, TASMANIA¹

Period	Original \$m	Trend estimates ²	
		\$m	% change from corresponding month of previous year
1994			
January	221.6	231.8	7.1
1995			
January	220.9	230.1	- 0.7
February	211.8	232.0	0.2
March	232.7	234.2	1.2
April	229.7	236.1	2.0
May	229.0	237.1	2.4
June	226.6	237.3	2.5
July	225.3	237.0	2.5
August	230.5	236.9	2.6
September	222.3	237.5	3.2
October	236.0	238.9	4.2
November	251.6	240.7	5.2
December	320.5	242.6	5.9
1996			
January	243.2	244.5	6.3

¹ Survey has been re-designed—see Information Paper (8511.0).

² Trend estimates revised each month.

(Source: *Retail Trade, Australia*, ABS catalogue number 8501.0.)

	NSW	Vic.	Qld	SA	WA	Tas.	Aust. ¹
Population							
Estimated resident population, June 1995 ('000) p	6 115.1	4 502.0	3 277.4	1 474.0	1 731.7	473.0	18 054.0
Proportion of Australian population, June 1995 (%) p	33.9	24.9	18.2	8.2	9.6	2.6	100.0
Population growth rate, 12 months to June 1995 (%) p	1.1	0.6	2.5	0.3	1.8	0.1	1.2
Labour Force							
Employment growth, 12 months to February 1996 (trend series) (%)							
Males	2.1	1.4	2.1	1.7	0.8	1.7	1.8
Females	4.6	4.7	2.5	0.4	0.7	3.8	3.4
Persons	3.2	2.8	2.3	1.1	0.8	2.5	2.5
Unemployment rate (trend series), February 1996 (%)	7.6	8.7	9.3	9.4	7.9	10.0	8.4
Unemployment growth, 12 months to February 1996 (trend series) (%)	7.6	- 5.0	10.4	- 4.9	6.3	- 7.4	- 2.4
Participation rate (trend series), February 1996 (%)	62.7	63.8	64.9	61.6	66.2	61.1	63.8
Average weekly overtime worked per employee, November 1995 (hours)	1.2	1.3	1.1	1.0	1.3	0.9	1.2
Job vacancy rate, November 1995 (%)	1.1	0.7	0.6	0.3	1.2	0.7	0.9
Working days lost through industrial disputes, 12 months to December 1995 (days per '000 employees)	48	72	148	28	150	22	79
Wages and Prices							
Average weekly total earnings, full-time adult employees (original series) November 1995 (\$)							
Males	810.2	750.2	697.4	693.1	792.2	687.9	761.6
Females	618.8	595.0	564.7	560.9	574.4	569.0	596.0
Persons	740.0	697.4	650.2	650.9	713.1	648.2	702.9
Average weekly total earnings, full-time adult employees, growth rate, 12 months to November 1995 (%)	6.0	4.4	2.9	2.4	5.4	1.8	4.7
Consumer price index, all groups, annual growth to December quarter 1995 (%)	5.8	4.8	4.3	4.4	4.8	4.4	5.1
Building							
% change in the number of new residential dwelling units approved in 12 months ended January 1996, over the same period previous year	- 19.2	- 19.9	- 38.4	- 39.0	- 34.5	- 22.7	28.8
Finance and Retail Trade							
% change in private new capital expenditure, 12 months ended September 1995, over the same period previous year	16.3	7.0	21.9	23.5	24.5	53.5	16.8
% change in trend estimates turnover of retail establishments, January 1996 (change from corresponding month of the previous year)	11.0	5.9	5.8	7.1	10.3	6.3	8.3
Transport							
% change in number of new motor vehicles (excluding motorcycles) registered 12 months ended January 1996, over the same period previous year	1.7	6.6	2.5	5.6	- 0.6	2.2	3.3
Agriculture							
% change in the number of livestock slaughtered 12 months ended January 1996 over the same period previous year							
Cattle and calves	- 3.3	0.9	- 13.3	7.3	- 0.4	12.3	- 4.5
Sheep and lambs	- 14.4	- 11.9	- 20.6	- 20.5	- 9.9	- 14.9	- 14.3
Tourism							
Room occupancy rates for hotels, motels etc. with facilities, September quarter 1995 (%)	60.2	52.4	67.3	50.3	61.1	42.1	59.9
Australian National and State Accounts							
% change in GSP (GDP), Constant Price							
Trend Series							
Jun qtr 1995 to Sept qtr 1995	0.6	0.6	1.1	1.7	1.0	- 0.4	0.5
Sept qtr 1994 to Sept qtr 1995	3.0	3.1	2.6	3.3	3.2	0.0	2.3

¹ Australian totals include the ACT and NT.

EXPLANATORY NOTES

INTRODUCTION

1 This publication contains latest figures for a comprehensive range of economic indicators. Statistics shown in this publication are the latest available at the date of preparation and may be subject to revision in subsequent issues. In a number of cases figures appearing in this publication are preliminary and are subject to revision in subsequent issues. Reference should therefore always be made to the latest issue or to the statistical publication on the specific subject.

SEASONAL ADJUSTMENT AND TREND ESTIMATION

2 Seasonal adjustment is a means of removing the estimated effects of normal seasonal variation from the series so that the effects of other influences on the series can be more clearly recognised. Seasonal adjustment does not aim to remove the irregular or non-seasonal influences which may be present in any particular month. This means that month-to-month movements of the seasonally adjusted estimates may not be reliable indicators of trend behaviour.

3 The smoothing of seasonally adjusted series reduces the impact of the irregular components of the seasonally adjusted series and creates trend estimates. These trend estimates are derived by applying a 13-term Henderson-weighted moving average to all months except the last six. The last six monthly trend estimates are obtained by applying surrogates of the Henderson average to the seasonally adjusted series. Trend series are used to analyse the underlying behaviour of the series over time.

4 While this smoothing technique enables estimates to be produced for the latest month, it does result in revisions to the most recent months as additional observations become available. Generally, subsequent revisions become smaller and after 3 months have a negligible impact on the series. Revisions also occur as a result of the annual review of seasonal factors.

5 Users may wish to refer to the ABS Publication *A Guide to Interpreting Time Series – Monitoring 'Trends' – An Overview* (1348.0) for more detailed information on smoothing seasonally adjusted time series data.

RELATED PUBLICATIONS

6 Current publications produced by the ABS are listed in the *Catalogue of Publications and Products* (1101.0). The ABS also issues, on Tuesdays and Fridays, the *Release Advice* (1105.0) which lists publications to be released in the next few days. The Catalogue and *Release Advice* are available from any ABS office.

UNPUBLISHED STATISTICS

7 As well as the statistics included in this and related publications, the ABS may have other relevant unpublished data available. Inquiries should be made to Information Inquiries on (002) 20 5800 or to any ABS office.

EFFECTS OF ROUNDING

8 Some figures have been rounded and discrepancies may occur between totals and sums of the component items.

SYMBOLS AND OTHER USAGES

n.a.	not available
n.y.a.	not yet available
..	not applicable
—	nil or rounded to zero
p	preliminary—figure or series subject to revision
r	figure or series revised since previous issue

Produced by the Australian Government Publishing Service
© Commonwealth of Australia 1996

Recommended retail price: \$16.50



2130360004962
ISSN 1034-1803